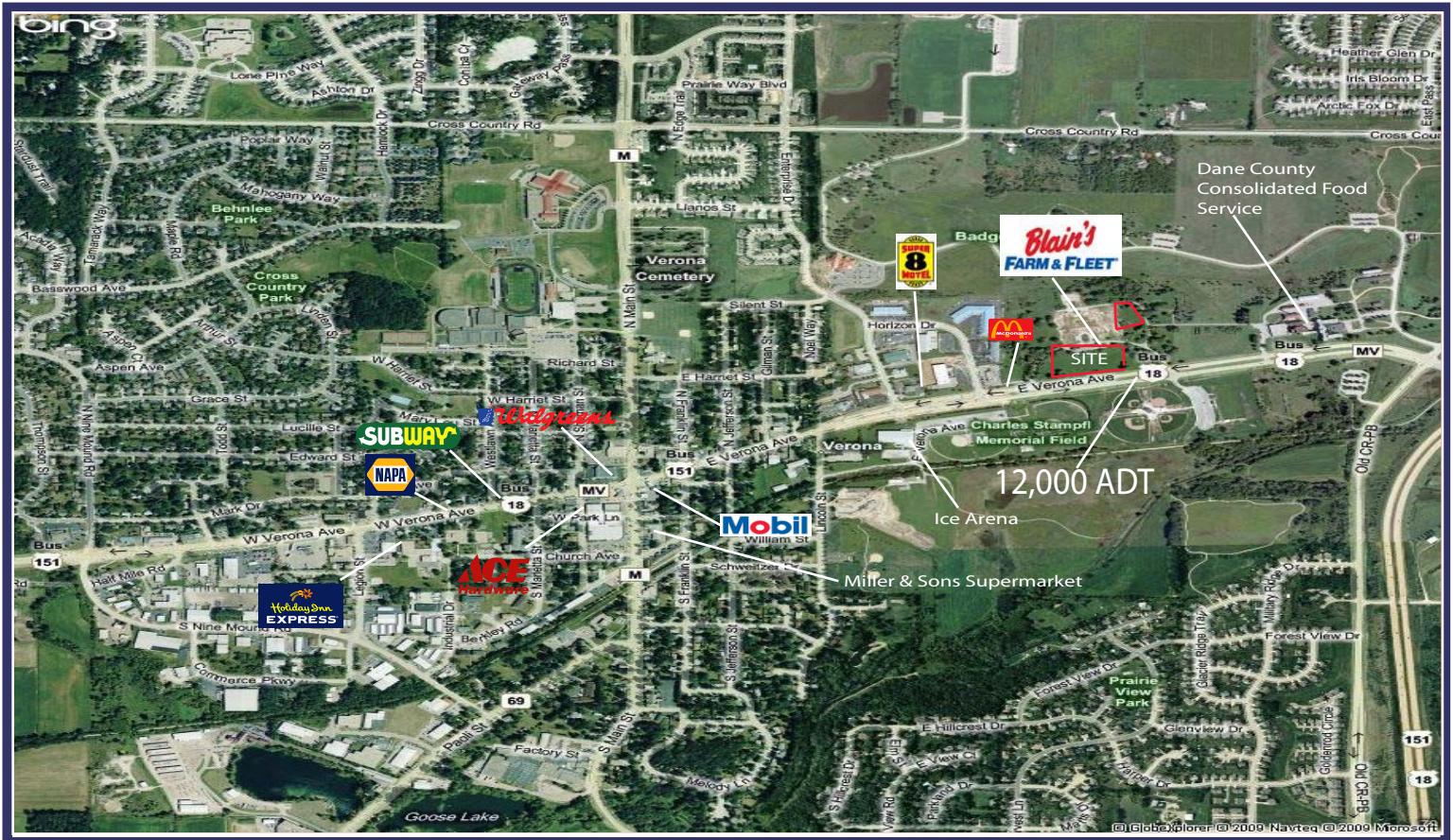


Vernick & Associates Ltd.

OUTLOTS FOR SALE

BLAIN'S FARM & FLEET

Verona, Wisconsin - 6 Sites Available



For more information, contact:
Vernick & Associates Ltd.

600 Hometown Circle
Verona, Wisconsin

Kevin Vernick
President
Phone: 773.327.0620
Fax: 773.327.0622
Cell: 773-398-3888
kvernick@vernickassociates.com

Brandon Ricciardi
Phone: 773.327.0618
Fax: 773.327.0622
Cell: 847.372.4521
bricciardi@vernickassociates.com

- 12,000 ADT along E. Verona Ave.
- Located one mile Southwest of Madison, Verona is one of the fastest growing towns in Dane County.
- The new Blain's development provides 6 outlots for development ranging in size from 1.0 Acre to 6.45 Acres
- This Blain's development was awarded "Best Retail Development" for 2008 from InBusiness Magazine out of Madison covering Dane County.

The information contained herein was obtained from sources we consider reliable. We cannot be responsible, however, for errors, omissions, prior sales, withdrawal from the market or change in price. Seller and broker make no representation as to the environmental condition of the property and recommend purchaser's independent investigation.

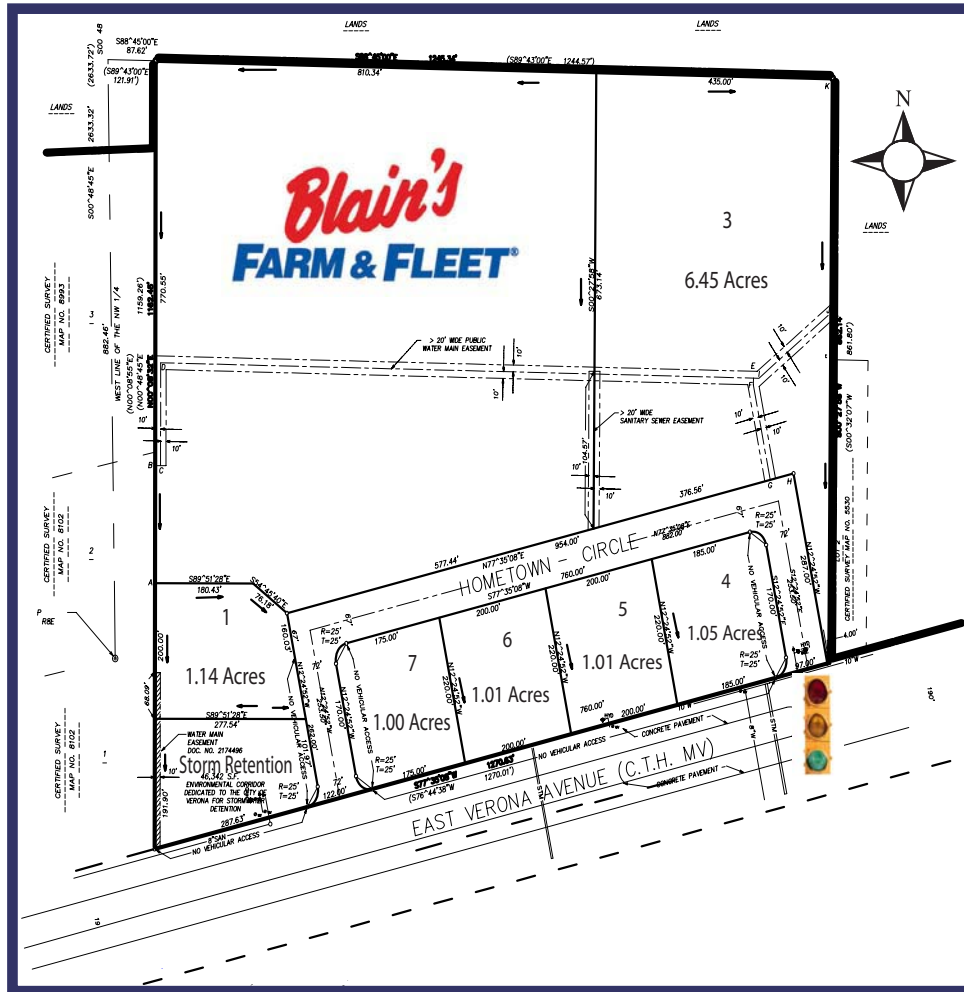
Vernick & Associates Ltd.

Vernick & Associates Ltd.

OUTLOTS FOR SALE

BLAINS FARM & FLEET

Verona, Wisconsin - 6 Sites Available



Demographics (Estimated 2009)

Miles	1	3	5
Population	8,048	25,030	65,795
Total Housing Units	2,984	9,742	26,770
Average Household Inc.	\$93,153	\$88,911	\$82,599

For more information, contact:

Kevin Vernick
 President
 Phone: 773.327.0620
 Fax: 773.327.0622
 Cell: 773.398.3888
 kvernick@vernickassociates.com

Brandon Ricciardi
 Phone: 773.327.0618
 Fax: 773.327.0622
 Cell: 847.372.4521
 bricciardi@vernickassociates.com

